

# XENON HELIDECK FLOODLIGHT



**Compliant with CAP437**

**ATEX Category 2**

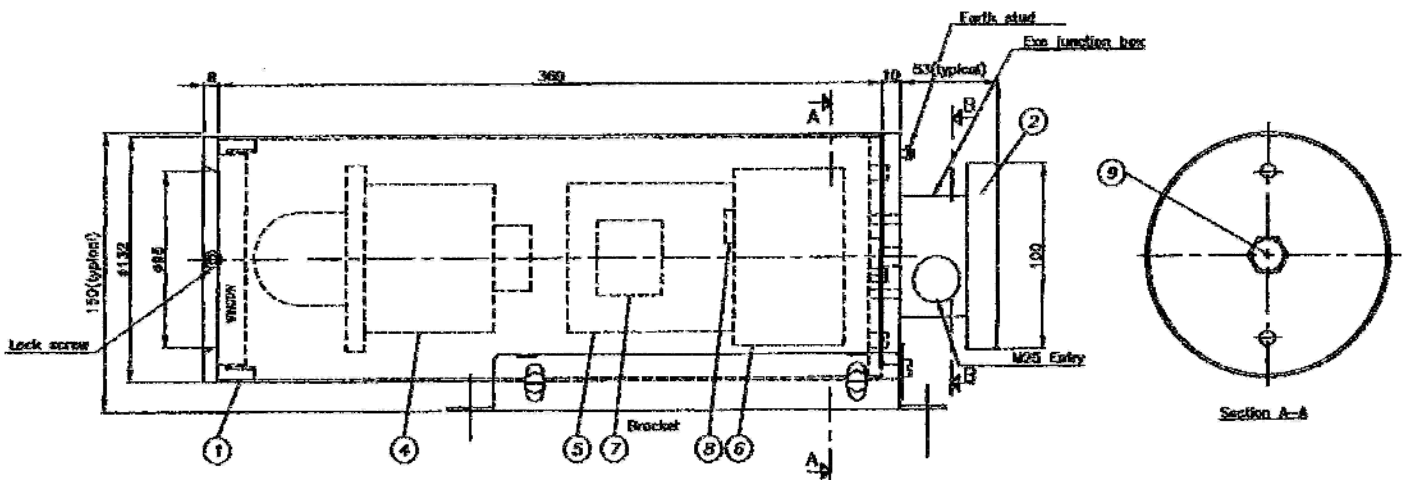
**Ex II 2 G EEx de IIC T4 IP66**

**Certified for use in zone 1 and 21**

Article number	Wattage	Voltage	Lens	Terminals	Entries
XCX1301360E-254	50W	220-254Vac	Glass	4 x 4mm <sup>2</sup>	2 x M25 (Clearance)
XCX1301360E-120	50W	110-120Vac	Glass	4 x 4mm <sup>2</sup>	2 x M25 (Clearance)
XCX1301360E-24	50W	24Vdc	Glass	4 x 4mm <sup>2</sup>	2 x M25 (Clearance)

## Features:

- ✚ AISI316 stainless steel flameproof construction
- ✚ Xenon lamp D2S/ 35 Watt
- ✚ Toughened glass lens
- ✚ Shock and vibration resistant
- ✚ Ingress protection IP66
- ✚ Power supply 220-254Vac, 110-120Vac, 24Vdc
- ✚ -20°C to +40°C ambient temperature
- ✚ AISI316 stainless steel adjustable mounting bracket



**SAFE answers to HAZARDOUS questions**