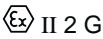


The TNCLS range of Ex em LED backlights are designed for use to illuminate level gauges in all kinds of industry where an explosive atmosphere may be present. TNCLS offers a long life, low maintenance LED solution to enable the operator to accurately read the level through the gauge glass.

Specifications

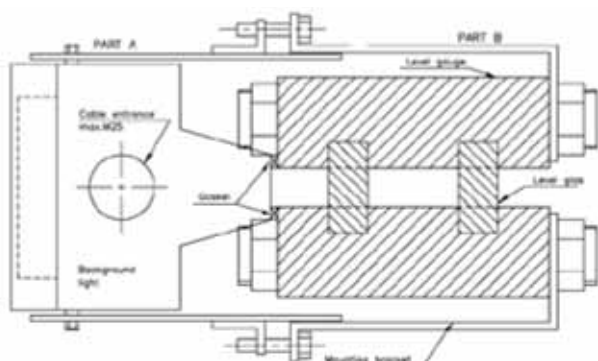
Material	Acid resistant stainless steel AISI 316L
IP Rating	IP66
Temperature	-20°C to + 45°C (T4)
Approvals	
- ATEX	DNV-2002-OSL-ATEX-0195
Standards	EN/IEC: 60079-0, 60079-7, 60079-18
Ex-Code	Ex em II T4  II 2 G
Surface treatment	Acidized
Earthing	M6 inside and outside
Cable entry	Max. 2xM25 in top and / or bottom, and/or sides
Power consumption	Approx. 3VA per module
Voltage	220-240VAC or 254VAC
Frequency	50-60 Hz
Humidity	100%
Terminals	Minimum 4x2.5 m ²
Lumination colour	Yellow



Size-qty. modules	Total length (A) mm	Light exposure (B) mm	Weight kg
27-1	270	250	2.3
30-1	300	280	2.5
34-1	340	320	2.7
36-1	360	340	2.8
27-2	540	520	4.3
30-2	600	580	4.6
34-2	680	660	5.1
36-2	720	700	5.3
27-3	810	790	6.2
30-3	900	880	6.7
34-3	1020	1000	7.3
36-3	1080	1060	7.5
30-4	1200	1180	8.5

Size-qty. modules	Total length (A) mm	Light exposure (B) mm	Weight kg
27-1	270	250	2.3
30-1	300	280	2.5
34-1	340	320	2.7
36-1	360	340	2.8
27-2	540	520	4.3
30-2	600	580	4.6
34-2	680	660	5.1
36-2	720	700	5.3
27-3	810	790	6.2
30-3	900	880	6.7
34-3	1020	1000	7.3
36-3	1080	1060	7.5
30-4	1200	1180	8.5

Dimensions



Several units can be assembled to one column

Type key: TNCLS L-X

L = Module length

X = No. of modules

Total length: A = L*X

Other sizes upon request



STL International Ltd
 Hill Farm, Linton Hill
 Linton, Maidstone
 Kent. ME17 4AL
 United Kingdom
 tel. +44 (0)1622 749633
 fax. +44 (0)1622 746800
 email. solutions@stl-int.co.uk
 web. www.stl-int.co.uk