

Fluorescent Luminaire Zone 1 Wireless BLACK START

MAINTENANCE FREE – SEALED FOR LIFE
10 year warranty *



ATEX Category 2

⊕ II 2 G Ex e mb II T6

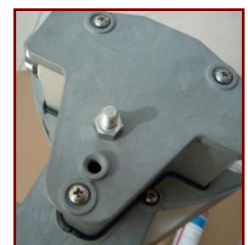
⊕ II 2 D Ex tD A21 T80°C IP66/68

Certified for use in zone 1 and 21
KEMA 08ATEX0163

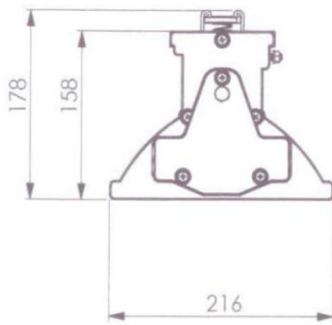
Article number	Wattage	Voltage	Termination	Weight (kg)	Lumen
TNAMLB1218C1B	2x18W	220-264Vac	JB – 2xM25	12.0	2600 Lumen
TNAMLB1236C1B	2x36W	220-264Vac	JB – 2xM25	12.0	6700 Lumen
TNAMLB1258C1B	2x58W	220-264Vac	JB – 2xM25	12.0	10400 Lumen

Features:

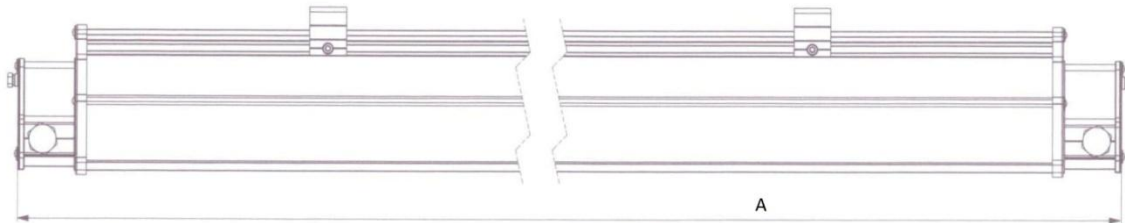
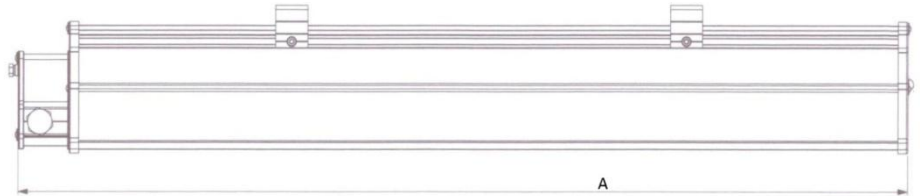
- ✚ Wireless 'BLACK START' function for unmanned facilities
- ✚ Multiple UPS powered control units (different access points to facility)
- ✚ Minimum system requirement: 1 control box and 1 luminaire
- ✚ Unlimited number of luminaires can be included
- ✚ 'Sealed for life' light fitting:
 - Construction – maintenance free design. Requires only visual inspection to IEC/EN 60079-17
 - Fully Recyclable
 - Seawater resistant anodised aluminium (compliant with NORSOK M-121, structural aluminium)
 - Electronic ballast with EOL protection
 - Pre-assembled long-life fluorescent lamps, colour 840
 - Toughened glass lens
 - Ambient temperature: -20°C to +55°C (for warranty: -20°C to +30°C (Emergency))
 - Supply voltage: 220V-264Vac 50/60Hz
 - Ingress protection: IP66/68 (with Terostat sealant)
 - 90min battery backup time as standard in normal operation
 - Self-testing: full function test at random every 100 days (RED error LED)
 - Sliding mounting brackets for easy and quick installation
 - Entries: 2xM25 clearance entries
 - 0.5-6mm² spring terminals wired for single phase looping
- ✚ Double junction box optional



Dimensions:

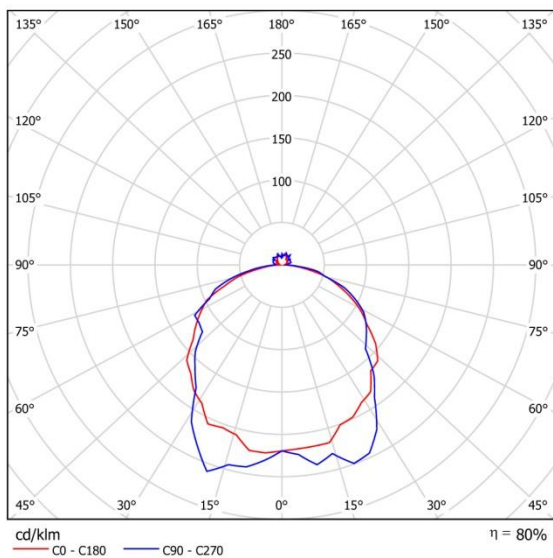


Type	Single JB (mm)	Double JB (mm)
2x18W EM/BS	880	950
2x36W EM/BS	1330	1400
2x58W EM/BS	1630	1700

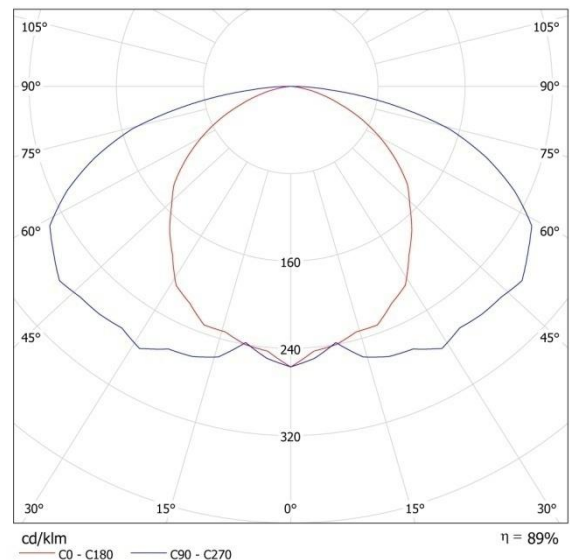


Light distribution curve:

2xT8



2xLED



Mounting options:



SAFE answers to HAZARDOUS questions