

Specifications

IP Rating	IP66-67
Temperature	-50°C to +60°C
Approvals	
- Atex	IMQ09ATEX019U
Standards	EN/IEC: 60079-0, 60079-1 EN: 61241-0, 61241-1
Ex-Code	Ex d IIC Ex tD A21

Pushbutton PLA

Pushbutton Operators - Modular Barrel M32 x 1,5.

Code	Type	Colour	Description	Weight (kg)
A.0276.11	PLA 10	Black	Start pushbutton operator	0.150
A.0276.12	PLA 20	Red	Stop pushbutton operator	0.150
A.0276.13	PLA 30	Green		0.150

Pushbutton PLB

Pushbutton Lockable Operators - Modular Barrel M32 x 1,5.

Code	Type	Colour	Description	Weight (kg)
A.0276.14	PLB 10	Black		0.180
A.0276.15	PLB 20	Red		0.180
A.0276.16	PLB 30	Green		0.180

Pushbutton PLF

Key Pushbutton Operator - Modular Barrel M32 x 1,5.

Code	Type	Colour	Description	Weight (kg)
A.0279.11	PLF 10-01/12	Black		0.200

Pushbutton PLC-I

Mushroom-Head Momentary Pushbutton Operator -
Modular Barrel M32 x 1,5.

Code	Type	Colour	Description	Weight (kg)
A.0276.17	PLC-I	Red		0.150

Pushbutton PLC-S

Mushroom-Head Maintained Pushbutton Operator -
Modular Barrel M32 x 1,5.

Code	Type	Colour	Description	Weight (kg)
A.0276.18	PLC-S	Red		0.150

Pushbutton PLC-S Lockable

Lockable Safety Guard for PLC-S: Mushroom-Head Maintained
Pushbutton Operator - Modular Barrel M32 x 1,5.

Type	Colour	Description	Weight (kg)
PLC-S Lockable	Red		0.210



Pilot Lamps and Relative Tubular Lamps

Pilot Lamps Operator – Modular Barrel M32 x 1,5.

Code	Type	Colour	Description	Weight (kg)
A.0277.11	PLD 10	White		0.130
A.0277.12	PLD 20	Red		0.130
A.0277.13	PLD 30	Green		0.130
A.0277.14	PLD 40	Yellow		0.130
	PLD 50	Blue		0.130

Tubular Lamps for Pilot Lamp PLD...

Type with lamp holder BA9S: 10x28

Code	Type	Description
H.0010.72	L BA 110/130V	Incandescent Lamps with sockets BA9S – 3 W*
H.0010.73	L BA 220/260V	
H.0010.70	L BA 24/30V	
H.0010.71	L BA 48V	

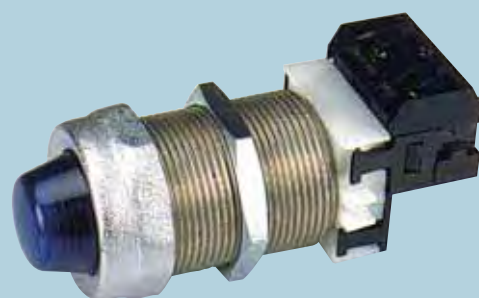
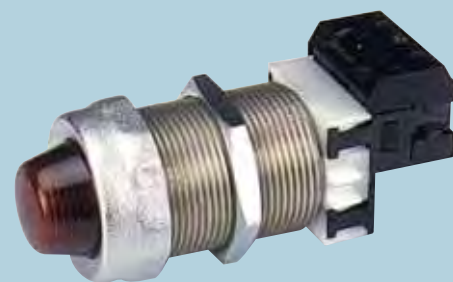
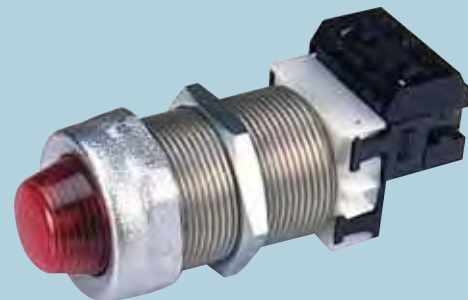
* Enclosures equipped with pilot light + incandescent lamps will have the Temperature Class = T4

LED for Pilot Lamp PLD...

Type with lamp holder BA9S: 10x28

Code	Type	Colour	Voltage
H.0013.12	LED BA9S 110V-B	White	110V
H.0013.11	LED BA9S 110V-G	Yellow	110V
H.0013.09	LED BA9S 110V-R	Red	110V
H.0013.10	LED BA9S 110V-V	Green	110V
H.0013.04	LED BA9S 12V-B	White	12V
H.0013.03	LED BA9S 12V-G	Yellow	12V
H.0013.01	LED BA9S 12V-R	Red	12V
H.0013.02	LED BA9S 12V-V	Green	12V
H.0013.16	LED BA9S 220-B	White	220V
H.0013.15	LED BA9S 220-G	Yellow	220V
H.0013.13	LED BA9S 220-R	Red	220V
H.0013.14	LED BA9S 220-V	Green	220V
H.0013.08	LED BA9S 24V-B	White	24V
H.0013.07	LED BA9S 24V-G	Yellow	24V
H.0013.05	LED BA9S 24V-R	Red	24V
H.0013.06	LED BA9S 24V-V	Green	24V

Enclosures equipped with pilot light + LED lamps will have the Temperature Class = T5/T6



Selector Switches (nominal current AC1-600V)

– Modular Barrel M32 x 1,5.

Code	Type	Poles	Rating A	Weight (kg)
A.0542.51	PSRC 120	1	20	0.130
A.0542.52	PSRC 220	2	20	0.160
A.0542.53	PSRC 320	3	20	0.200
A.0542.54	PSRC 420	4	20	0.200
A.0543.51	PSRC 132	1	32	0.200
A.0543.52	PSRC 232	2	32	0.200
A.0543.53	PSRC 332	3	32	0.250
A.0543.54	PSRC 432	4	32	0.250

PSRC – C

Step Switches (nominal current AC1-600V)

– Modular Barrel M32 x 1,5.

Code	Type	Poles	Rating A	Weight (kg)
A.0545.51	PSRC-C-120	1	20	0.130
A.0545.52	PSRC-C-220	2	20	0.200
A.0545.53	PSRC-C-320	3	20	0.250

PSRC – D

Change Over Switches (nominal current AC1-600V)

– Modular Barrel M32 x 1,5.

Code	Type	Poles	Rating A	Weight (kg)
A.0544.51	PSRC-D-120	1	20	0.130
A.0544.52	PSRC-D-220	2	20	0.200
A.0544.53	PSRC-D-320	3	20	0.250

Maximum 4 contact blocks for each operators

Code	Type	Description	Weight (kg)
A.0280.01	ELC - NO	NO FOR Pushbutton operator	0.006
A.0280.02	ELC - NC	NC FOR Pushbutton operator	0.006
	ELC – NC/NO	NC+NO Contact block combination	
	ELC – NO/NC	NO+NC Contact block combination	

