

## EFQL

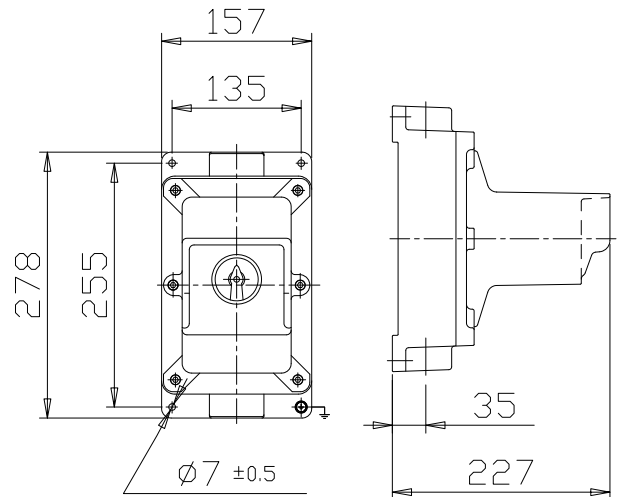
The EFQL range of Miniature Automatic Circuit Breakers are based on our EFQL Ex d enclosure manufactured in copper free aluminium and painted according to RAL 6003. The EFQL range can be delivered with automatic circuit breakers, on-load switches and selector switches up to 63A and is suitable for use indoor or outdoor, in corrosive and hazardous areas where gases, vapours and dusts may be present.



### Specifications

<b>Material</b>	Copper free aluminium (Cu<0.1%)
<b>IP Rating</b>	IP66-67 with flanged joint coated with silicone grease (contact our sales dept. for detailed reference)
<b>Temperature</b>	-30°C to 55°C
<b>Approvals</b>	
- Atex	INERIS 02ATEX0027X
- GOST	GOST Certificate
<b>Standards</b>	EN/IEC: 60079-0, 60079-1, 60079-7, 60079-18, EN: 61241-0, 61241-1
<b>Ex-code</b>	⊕ II 2 GD Ex d IIB T6 Ex tD A21 IP66 T85°C
	According to European Directive 94/9/EC (ATEX) For Zone 1 / Zone 2, Zone 21 / Zone 22
<b>Surface treatment</b>	External polyurethane painting (RAL 6003)
<b>Entries</b>	No 2 Entries diam. 1" or M32
<b>Standard identification</b>	Identification nameplate is realized in high resistance self-adhesive polyester with thermal transfer inscriptions
<b>Poles</b>	3 Poles
<b>Voltage</b>	220/660V 50/60Hz
<b>Accessories</b>	Residual Current Device "VIGI" Auxiliary Switch "OF" Alarm Switch "SD" Shunt trip release "MX+OF" Undervoltage release "MN" Customized colours
<b>Note</b>	<b>Foreseen with electrical unit up to 63 A</b> <b>External operating handle</b>

### Dimensions EFQL - 3



ITEM	NOTE	WEIGHT [kg]
TYPE EFQL - 3	Compatible until No. 8 steps of 9 mm. (MULTI-9)	3.250
TYPE EFQL - 4	Compatible until No. 10 steps of 9 mm. (MULTI-9)	4.600



STL International Ltd  
Hill Farm, Linton Hill  
Linton, Maidstone  
Kent. ME17 4AL  
United Kingdom  
tel. +44 (0)1622 749633  
fax. +44 (0)1622 746800  
email. solutions@stl-int.co.uk  
web. www.stl-int.co.uk