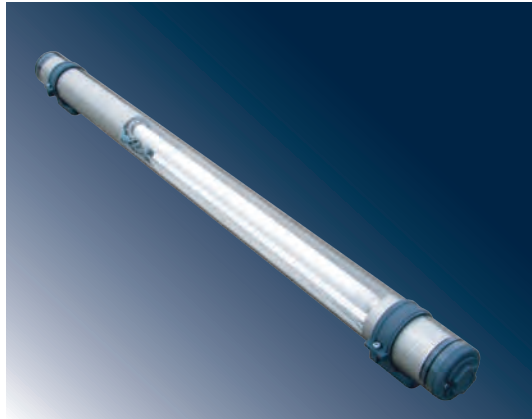


Industrial lighting fixtures – insulation class I Промышленные светильники класс изоляции I



Application: vehicle washes, dams of water reservoirs, swimming pools and chemical industry.

Body: plastic tube Ø70mm (4 mm thick transparent PC) with high impact resistance, B flammability level. PMMA tube on request.

Reflector: aluminium profile. Special aluminium profile used as cover of electrical parts.

System of fastening: direct fastening on the base with special mounting brackets, suspension self-locking cable suspender or suspension with brackets.

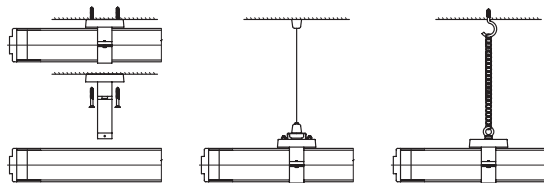
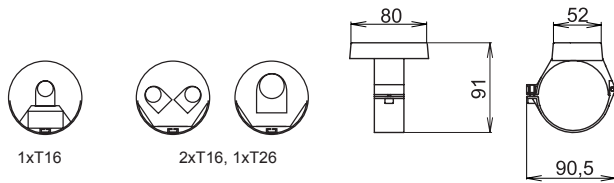
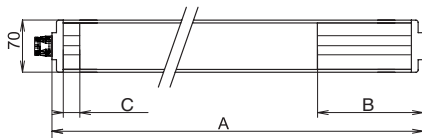


STL International Ltd
Hill Farm, Linton Hill
Linton, Maidstone
Kent. ME17 4AL
United Kingdom
tel. +44 (0)1622 749633
fax. +44 (0)1622 746800
email. solutions@stl-int.co.uk
web. www.stl-int.co.uk

REGISTERED

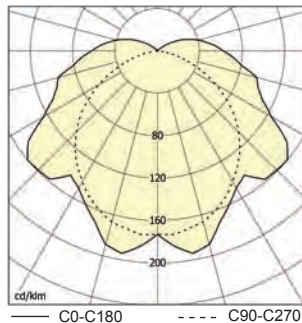
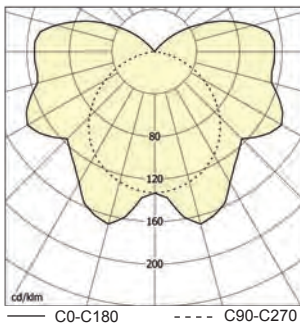
Technical parameters of the fixtures are referred in table on page 142.

Industrial fluorescent lighting fixtures



AQUA-I, 1x36W, IP67

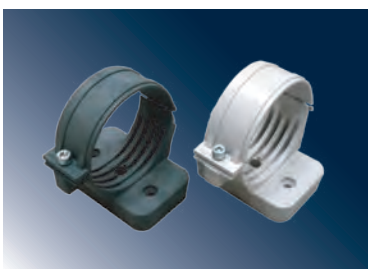
AQUA-I, 2x54W, IP67



Order no	Model	Lamp/ socket	Dimensions [mm]			Weight [kg]		
			A	B	C			
- inductive ballast/ индуктивный дроссель								
83625	AQUA-I-111, 1x11 W	TC-S/G23	584	221	100	-		
83620	AQUA-I-118-K, 1x18 W	T26/G13	1148	221	260	-		
83621	AQUA-I-136-K, 1x36 W		1739	221	240	4,2		
83626	AQUA-I-136, 1x36 W	TC-L/2G11	922	235	250	2,9		
83623	AQUA-I-158-K, 1x58 W	T26/G13	2066	240	270	-		
- el.ballast/ эл.дроссель								
83628	AQUA-I-111-EP, 1x11W	TC-SEL/2G11	584	221	80	-		
83617	AQUA-I-118-EP, 1x18W	T26/G13	1083	332	95	-		
83618	AQUA-I-136-EP, 1x36W		1683	322	95	3,7		
83619	AQUA-I-158-EP, 1x58W	T26/G13	1966	310	95	4,1		
83600	AQUA-I-106-EP, 1x6W	T16/G5	446	80	80	-		
83601	AQUA-I-108-EP, 1x8W		522			1,4		
83602	AQUA-I-113-EP, 1x13W		751			1,8		
83603	AQUA-I-114-EP, 1x14W		783			2,0		
83607	AQUA-I-124-EP, 1x24W		1148			425	100	-
83770	AQUA-I-214-EP, 2x14W							-
83771	AQUA-I-224-EP, 2x24W		1083			80	80	-
83604	AQUA-I-221-EP, 1x21W							2,6
83608	AQUA-I-139-EP, 1x39W		1439			425	95	3,3
83772	AQUA-I-221-EP, 2x21W							3,3
83773	AQUA-I-239-EP, 2x39W	1383	80	80	3,0			
83605	AQUA-I-128-EP, 1x28W				3,1			
83609	AQUA-I-154-EP, 1x54W	1739	425	95	-			
83774	AQUA-I-228-EP, 2x28W				3,9			
83775	AQUA-I-254-EP, 2x54W	1683	80	80	3,6			
83606	AQUA-I-135-EP, 1x35W				2,5			
83610	AQUA-I-180-EP, 1x80W	2039	425	95	4,5			
83776	AQUA-I-235-EP, 2x35W				4,5			
83777	AQUA-I-280-EP, 2x80W	2104	488	95	-			

- special accessories/ Особое оснащение

51106	Plastic suspension bracket with accessories/ Завесная петля с принадлежностями
1540	Steel suspension chain - polished (1 pack = 5 kg)/ Стальная завесная цепочка – полир. (1шт. = 5 кг)
51127	Self-locking cable suspender/ Самокрепящая подвеска
53630	Plastic mounting bracket (1pc) – dark grey / пластиковая обойма (1шт) – темно-серая
53629	Plastic mounting bracket (1pc) – bright grey / пластиковая обойма (1шт) – светло-серая
53628	AQUA mounting bracket- stainless steel (1 pease)/ AQUA обойма – нержавейка (1 шт.)



Suspension via self-locking cable suspender
Подвешивание при помощи самозжимных подвесов

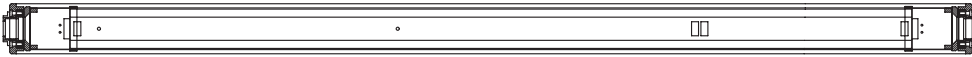


Suspension via suspension brackets
Подвешивание с помощью петель

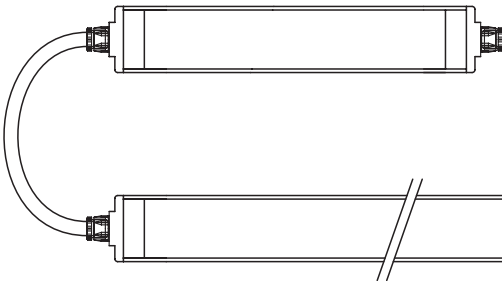


Modifications on request / Модификации по желанию

1) combined version / комбинированный вариант



2) with separate ballast part / с отдельной дроссельной частью



3) with emergency unit / с аварийным модулем - **It is necessary to consult with producer / Необходимо консультировать с производителем**
- for non-maintained emergency lighting – AQUA-Em / для непостоянного аварийного освещения – AQUA-Em
- for maintained emergency lighting – MULTIAQUA-Em / для постоянного аварийного освещения - MULTIAQUA-Em

