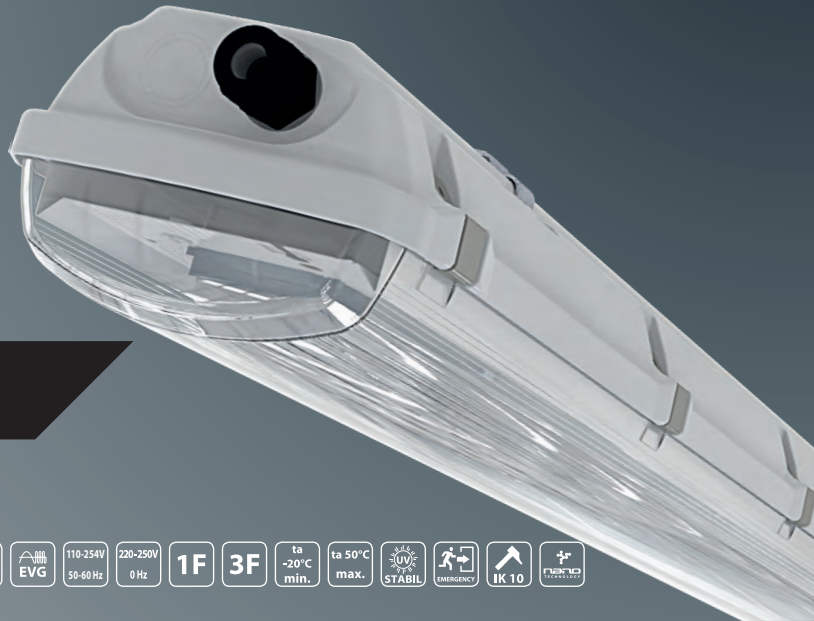




5 year warranty

EXTRA-Ex-LED

IP 66



Application: premises with danger of explosion. Lighting fixture is certified by FTZÚ Ostrava-Radvanice (certificate FTZÚ 16 ATEX 0167X).

Ballast: electronic 110 – 254 V, 50/60 Hz, 220 – 250 V, 0 Hz

Body: Plastic material PC (polycarbonate), grey colour RAL7035

Cover: Plastic material PC (transparent polycarbonate), chemical resistance

Fastening: Direct fastening on ceiling or wall lighted area by means of ceiling fastening brackets (basic equipment)

Connection: Screwless three-pole terminal block, max. diameter of wires 2,5 mm²; lighting fixture is ready to connect two wires (order additional cable gland)

Standard equipment: 1 pc sealing cable gland, 3 pcs sealing plug, 2 pcs fastening spring, double clamp for power cables, stainless steel clips

Calculated lifetime – LED modules: L80B10 ta40 – 70 000h
L70B10 ta40 – 100 000h

On request: Em – non-maintained emergency lighting (1,5 h, 3 h)

MULTI – maintained emergency lighting (1,5 h, 3 h)

1/3 F – one or three phase through-wiring connection

4K-6K – colour temperature

NANO – light fixture protected by special nanolayer (hydrophobic, oleophobic or antibacterial protection)

		T _a	(lm)*	(W)**	AxBxC (mm)
-20°C < ta <=+50°C					
055290	EXTRA-Ex-LED-2500-218-4K	4000	2360	28	670 x 155 x 105
055291	EXTRA-Ex-LED-5000-236-4K	4000	4650	55	1280 x 155 x 105
- maintained emergency mode 1,5h;3h, 0°C < ta <=+40°C					
055294	MULTIEXTRA-Ex-LED-5000-236-4K, 1h	4000	4650/10%	55	1280 x 155 x 105
055295	MULTIEXTRA-Ex-LED-5000-236-4K, 3h	4000	4650/5,5%	55	1280 x 155 x 105
- non-maintained emergency mode 1,5h;3h, 0°C < ta <=+50°C					
055292	EXTRA-Ex-Em-LED-5000-236-4K, 1h	4000	476	-	1280 x 155 x 105
055293	EXTRA-Ex-Em-LED-5000-236-4K, 3h	4000	260	-	1280 x 155 x 105
- special equipment					
008060	Cable gland Ex M20x1,5				
008090	Sealing plug Ex M20x1,5				
008097	Plastic nut WISKA EMUG 20 M20x1,5				
007074N	Flat sealing ring EPDM 27x18,5x1,5 mm				
051131	cable suspender-EXTRA-2x (3m)				
001696	wire suspender EXTRA				

(lm)* - luminous flux, (W)** - input power

Application of light fixtures in areas with danger of explosion

	Marking of external influences	Classification areas	
		Marking	Formation prescription
Danger of explosion of flammable dust	BE3N1	ZÓNA 21,22	ČSN EN 60079-14 ČSN EN 60079-10-2
Danger of explosion of flammable gases and vapors	BE3N2	ZÓNA 1,2	ČSN EN 60079-14 ČSN EN 60079-10-1

EXTRA-Ex-LED

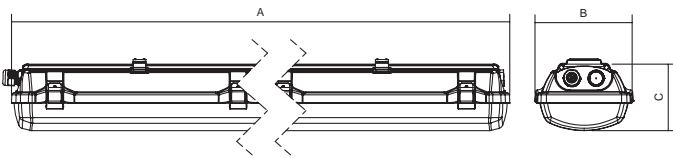
⊕ II 2G Ex eb mb op is IIC T4 Gb

⊕ II 2D Ex tb IIIC T67°C Db

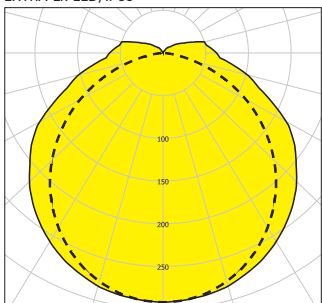
Type marking

EXTRA-Ex-LED-XXXX-YYY	type for standard operation
MULTIEXTRA-Ex-LED-XXXX-YYY	type for maintained emergency mode
EXTRA-Ex-Em-LED-XXXX-YYY	type for non-maintained emergency mode
XXXX*	luminous flux (lumen) 2500/5000
YYY*	type pf used housing 218/236

FTZÚ 16 ATEX 0167X



EXTRA-Ex-LED, IP66



STL International Ltd

Hill Farm, Linton Hill, Maidstone, Kent, ME17 4AL, UK T. +44 (0)1622 749633 eMail. solutions@stl-int.co.uk Web. www.stl-int.co.uk



For areas with with the appearance of oily emulsions, aggressive chemicals, vibration, mechanical stress we recommend to use the fixtures series PITBUL-Ex (LED), RAMBO-Ex, AQUA-Ex, EXTEND-Ex (LED).